



## KEY CONTACTS

For more information about the Hospital Liaison Nurse and the services offered by the MS Society of WA, please contact:

**Community Access Nurses (Metro)**  
9365 4812, 9365 4846 or 9365 4870

**Community Access Nurse (Southwest Country)**  
9721 3297 or 0408 952 363

**The Multiple Sclerosis Society of WA (Inc)**  
Parkhill Way, Wilson WA 6107

[www.multiple-wa.asn.au](http://www.multiple-wa.asn.au)

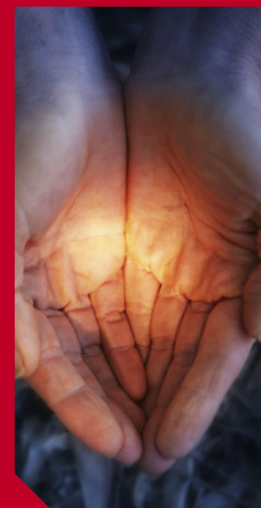
### Newly diagnosed services

The MS Society provided access to a number of services and programs for the newly diagnosed including:

- MS Nurses who provide advice and community based support
- Immunotherapy training and ongoing support
- Experienced allied health professionals eg physiotherapist, occupational therapists, counsellors and carers
- Peer Support programs
- Self managed programs eg fatigue management
- Education seminars and workshops
- Symptom management advice
- Educational resources and articles about MS

## HOSPITAL LIASON NURSE

**Nurse Manager**  
**Office 9365 4809**  
**Mobile 0418 916 375**  
**Pager 9346 3333**



SUPPORTING WESTERN AUSTRALIANS  
WITH MULTIPLE SCLEROSIS

SEEKING THE CURE PROVIDING THE CARE

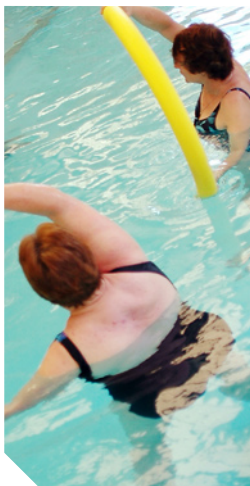
## WHAT IS **MS?**

Multiple sclerosis is a disease of the central nervous system of uncertain cause that damages the nerve fibre insulation (myelin) in a random and patchy manner, causing a wide range of neurological symptoms.

## **MULTIPLE SCLEROSIS** SOCIETY OF WA

The MS Society of WA is committed to providing high quality services and support for people with Multiple Sclerosis and their families. The diverse range of services provided to Members includes:

- Physiotherapy
- Immunotherapy support
- Counselling
- Occupational therapy
- Respite care
- Community Access Nursing
- In-home support
- **Hospital Liaison Nurse**



## ROLE OF THE **HOSPITAL LIASON NURSE**

The Hospital Liaison Nurse provides access to an MS specific nurse for those not wanting direct contact with the MS Society. This role provides:

- a primary contact for people with MS presenting through the health system
- holistic assessment, advice, support and referrals
- immunotherapy education, training and support
- enhanced relationships – linking the hospital and communitybased health professionals
- advocacy for those affected by MS to achieve best outcomes

The Hospital Liaison Nurse works with people with MS in the community and in hospital-based clinics.



## **BENEFITS**

People with MS who receive care and support from a Hospital Liaison Nurse enjoy the benefits of improved communication with their health care professionals. Typically, they have a greater understanding of what to expect from their condition, and value the link the nurse provides to their neurologist.

